

An abstract painting featuring a large, central white area surrounded by vibrant blue and dark blue washes. The bottom portion of the artwork is dominated by textured, earthy tones of green, brown, and red, suggesting a landscape or natural elements. The overall style is expressive and gestural, with visible brushstrokes and splatters.

Lewis Noble
AINSCOUGH
CONTEMPORARY ART
www.acag.co.uk

The paintings in this exhibition are about the experience of being in the landscape. For me, the landscape is always changing and moving, it is never static. From moment to moment the light changes, clouds drift and change shape, waves wash in and out with the wind and tides. Drawing and painting direct from the subject allows me time to include sounds and other sensations which are very important in building up a more complete impression of the landscape around me.

When working outside, I use a combination of watercolour, gouache and acrylic. The different properties of the paints allow me to work in a very flexible way. I like to build the surface of the painting and then work into it, scratching and eroding it then rebuilding again, letting the image emerge through the process of painting. In this way the physical nature of the landscape is echoed in the multi-layered paint surface.

Lewis Noble

(Cover image)
Sun and rain spitting
20x20cm watercolour on paper



Autumn. Low cloud drifting
56x56cm mixed media on canvas



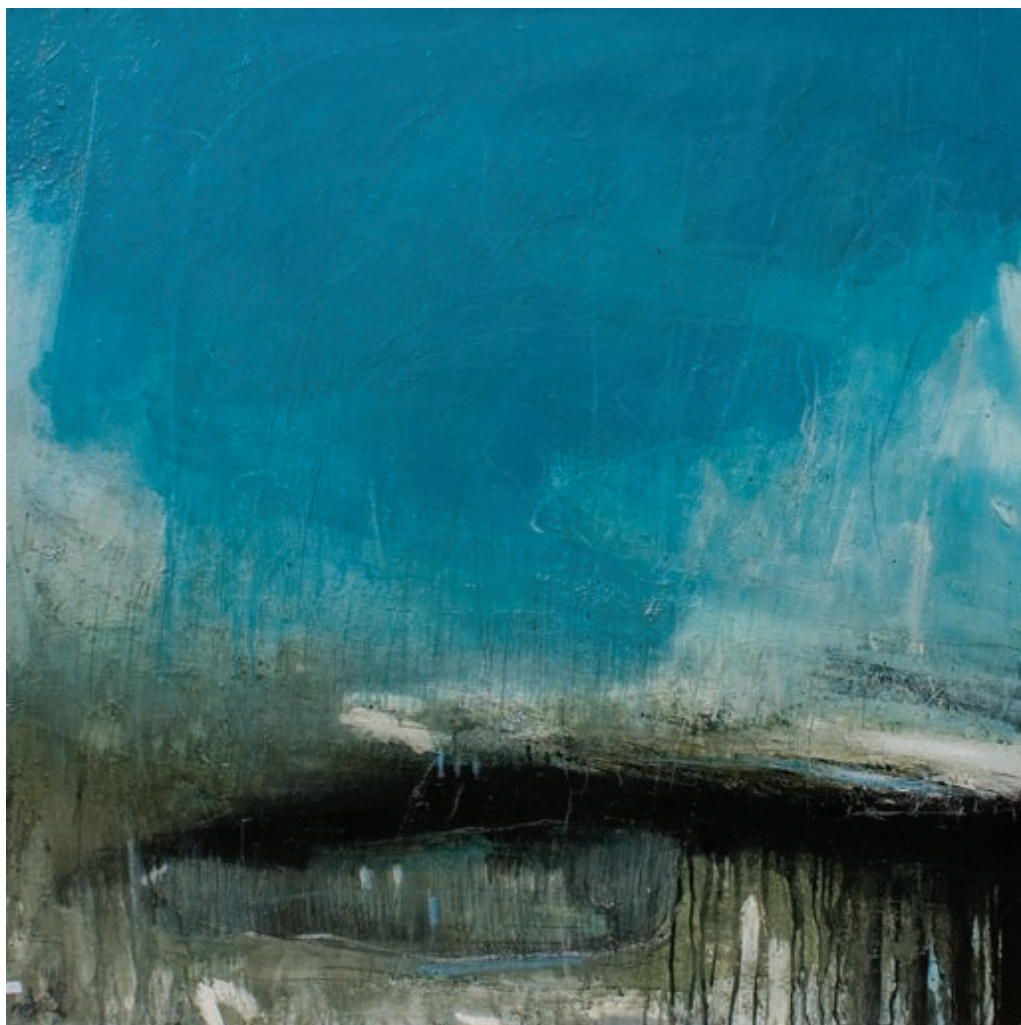
(Opposite)
Actual raindrops
31x31cm mixed media on canvas



4pm 22nd Sept
20x20cm watercolour,
gouache, acrylic and pencil on paper



Dark drifting clouds
17x25cm watercolour and pencil on paper

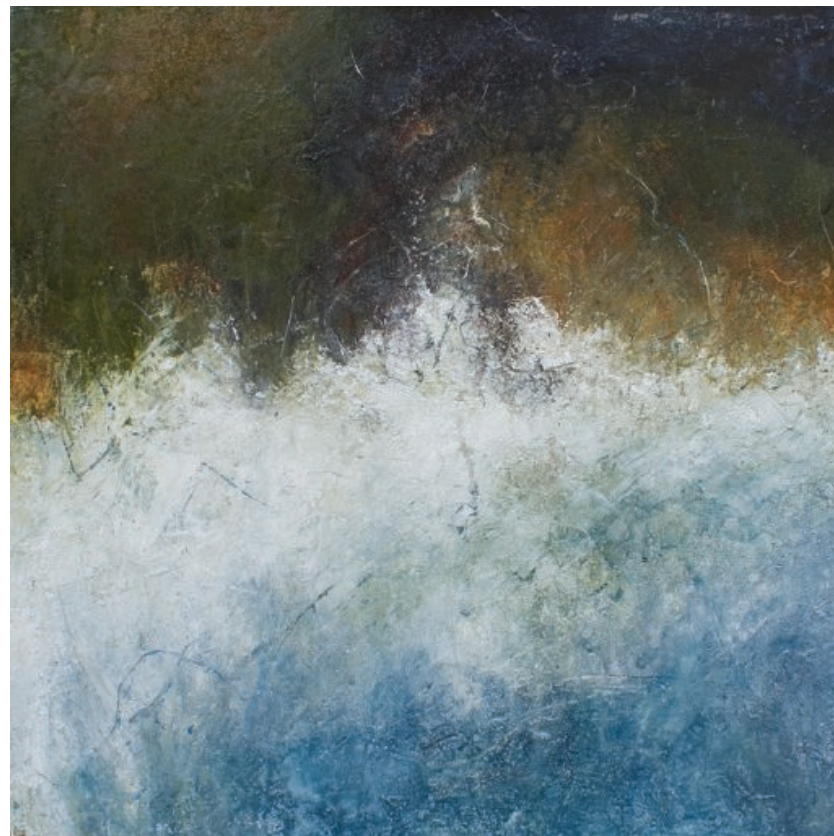


(Opposite)
Dew pond, big sky
110x110cm oil on canvas

Late hawthorn
56x56cm mixed media on canvas



Kynance Cove, Cornwall (iii)
41x41cm mixed media on canvas



Kynance Cove, Cornwall (ii)
56x56cm mixed media on canvas



(Opposite)
High cloud, wind, Alstonfield
100x100cm mixed media on canvas

Kynance Cove, Cornwall
56x56cm mixed media on canvas



Lichen, barbed wire, wind
30x30cm mixed media on canvas

(Opposite)
Limpets on a dark rock
120x120cm mixed media on canvas





Loud, incoming wave, Cornwall
56x56cm mixed media on canvas



(Opposite)
Morning wave rolling in, Cornwall
76x76cm mixed media on canvas



[Opposite detail]
Sky study (iii) 5th Oct
17x25cm watercolour and pencil on paper



(Opposite)
Morning. Light on a wave, Cornwall
76x76cm mixed media on canvas



Mr Blue Sky
15x22cm watercolour, acrylic
and pigment on paper



Pink horizon

*16x16cm watercolour, gouache,
acrylic and pencil on paper*



(Opposite)

Sitting. Quiet except for the wind
31x31cm mixed media on canvas

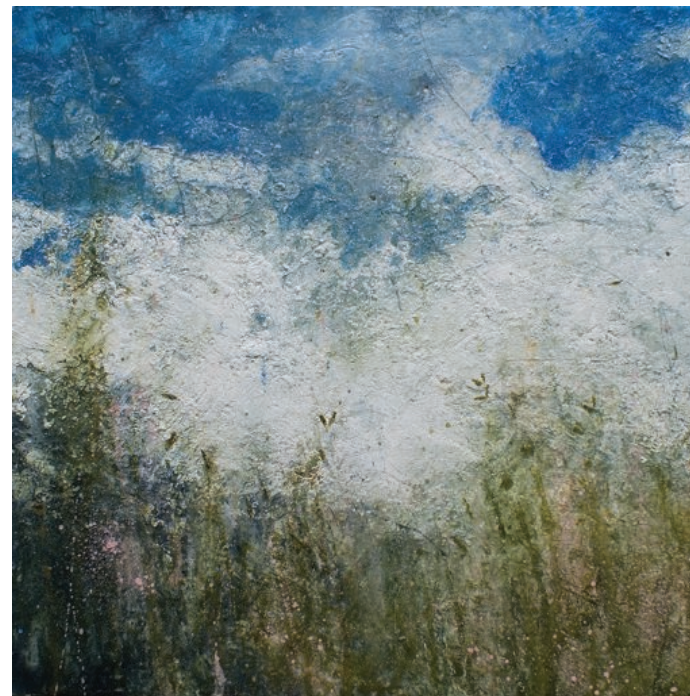


(Opposite detail)
Sky's a buzzing

30x30cm watercolour and gouache on paper



Tall grass, wind
30x30cm watercolour and gouache on paper



Tall grass, sound of the sky
36x36cm mixed media on canvas



Wind blown sky
21x21cm watercolour and pencil on paper



Sound of a wave
48x51cm mixed media on canvas

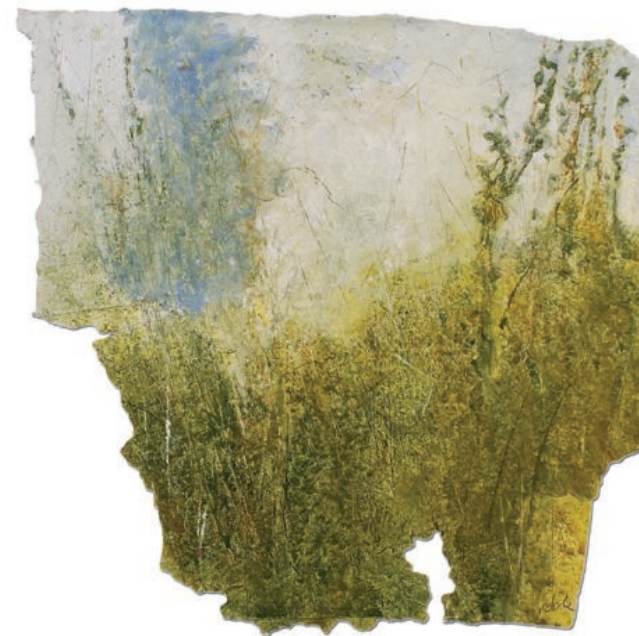
Slow autumn river
102x120cm oil on gesso panel





The rain approaching

20x20cm watercolour and gouache on paper



Summer rain spits

30x30cm watercolour and gouache on paper



Coast path
48x51cm mixed media on canvas

Lewis Noble

Born | 1967 London

Education

1989 – 1992 | BA (hons) Fine Art, Birmingham
Margaret Street (UCE)

Awards

Winner, Vickers Art Award 2001

Selected Recent Exhibitions

2011

Ainscough Contemporary Art, *London*
Hart Gallery, *London*
No9 The Gallery, *Birmingham*
Byard Art, *Cambridge*
Walker Galleries, *Harrogate*
Tregoning Gallery, *Derby*

2010

Hart Gallery
London Art Fair
Art London
Ainscough Contemporary Art, *Dartmouth*

2009

Chatsworth House, '*Chatsworth Reflected*'
Hart Gallery, London, '*Chatsworth Reflected*'

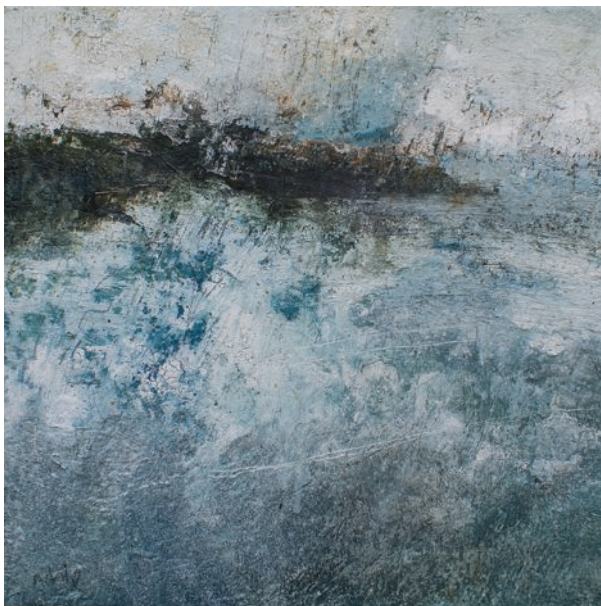
2008

Hart Gallery, London
London Art Fair
Art London
Ainscough Contemporary Art, '*Paintings from California*'
Tregoning Gallery, Derby, '*From Where I Stand*'

2007

Hart Gallery, London
London Art Fair
Art London
Tregoning Gallery, Derby, '*In Situ*'

(Back Cover)
Towards Falmouth
31x31cm mixed media on canvas



AINSCOUGH

CONTEMPORARY ART

Drayton Gardens
Chelsea
London
SW10 9QS
020 7341 9442
art@acag.co.uk

16 Foss Street,
Dartmouth,
Devon
TQ6 9DR
01803 832160
dartmouth@acag.co.uk

www.acag.co.uk